



Ark Victoria
Academy



Parents' Coffee Forum

December 5th 2022



'Growing, Learning, Succeeding Together'

Parents and school

- Parents' Coffee Forum
- PTA
- Listening campaigns
- Parents' evenings
- Parents' classes

Agenda for today

1. Welcome - Ms McSorley
2. Introduction to mental health ambassadors – Ms Foster
3. Ark Victoria Academy's approach to SEND - Ms Ayling and Ms Green
4. Community and school events - Mr Ibrahim
5. Secondary/Primary news - Ms McSorley, Mrs Twort



Ark Victoria
Academy



SEND at Ark Victoria
Academy



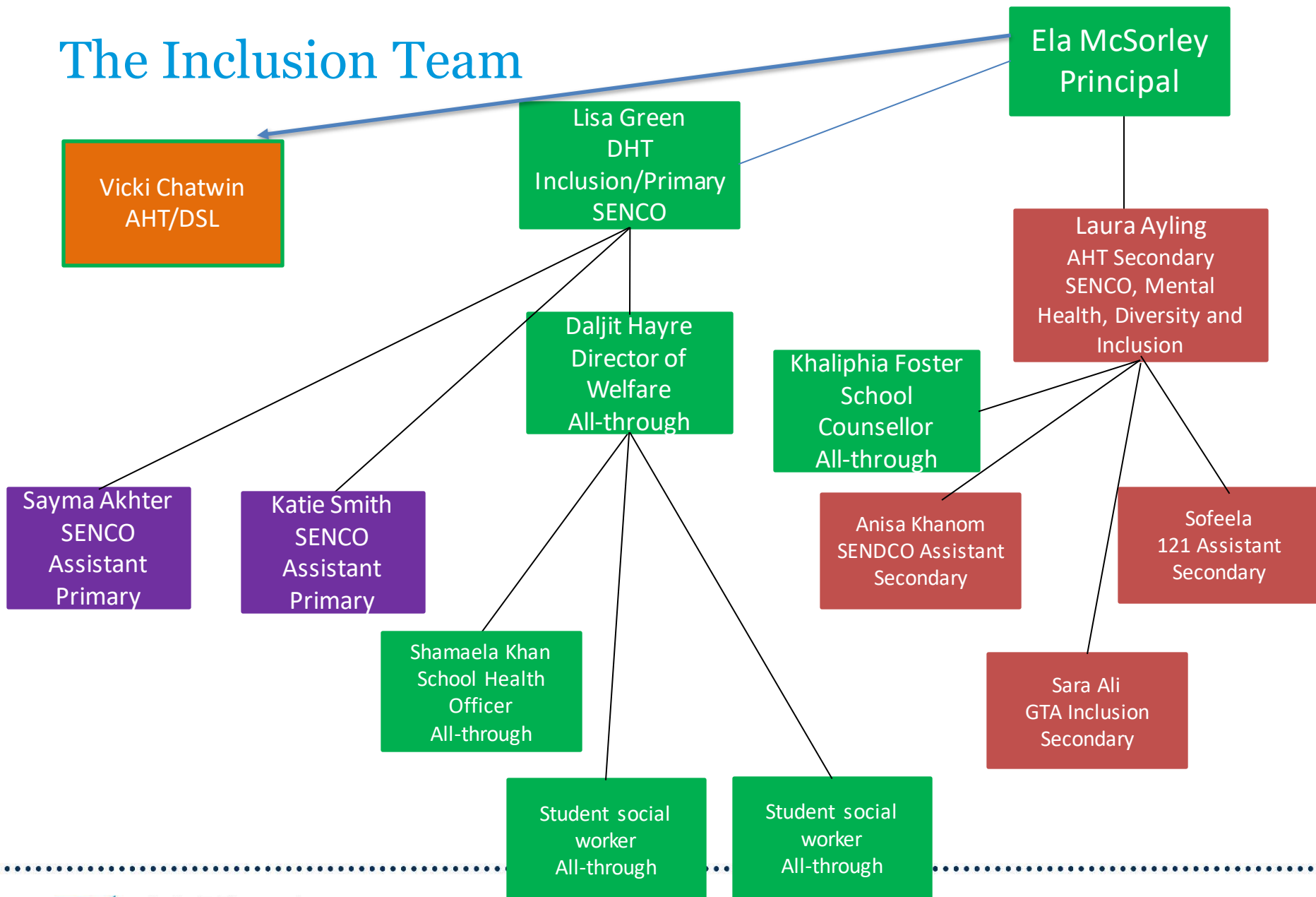
'Growing, Learning, Succeeding Together'

Vision for SEND

All pupils have their learning, wellbeing and safeguarding needs met, so that they can successfully learn and thrive in school and are able to achieve their life goals.



The Inclusion Team



Areas of need:

- **4 Broad areas:**
 - Communication and Interaction
 - Cognition and learning
 - Social, Emotional and Mental Health
 - Physical and sensory
- **Within those areas:**
 - MLD
 - SpLD
 - ASD
 - SEMH (ADD, ADHD)
 - SLCN
 - VI
 - HI
 - PD

Ark Victoria Academy's offer

- High Quality First Teaching
- Curriculum Adaptations
- SEND signature strategies
- Robust identification process
- Targeted interventions for all needs
- Specialised bespoke training
- Specialised Mental Health mentoring
- School Counsellor
- External agency communication
- Referrals to internal and external agencies
- Strong relationships with Educational psychology, CAT and PSS.
- EAL offer (identification and interventions)

Graduated Approach



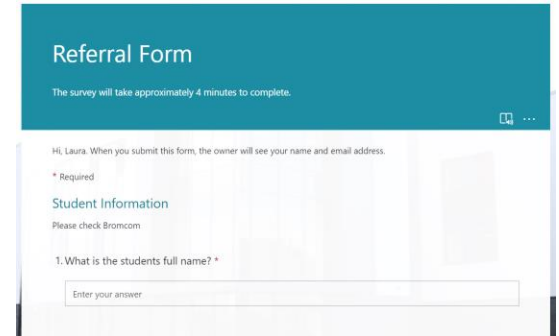
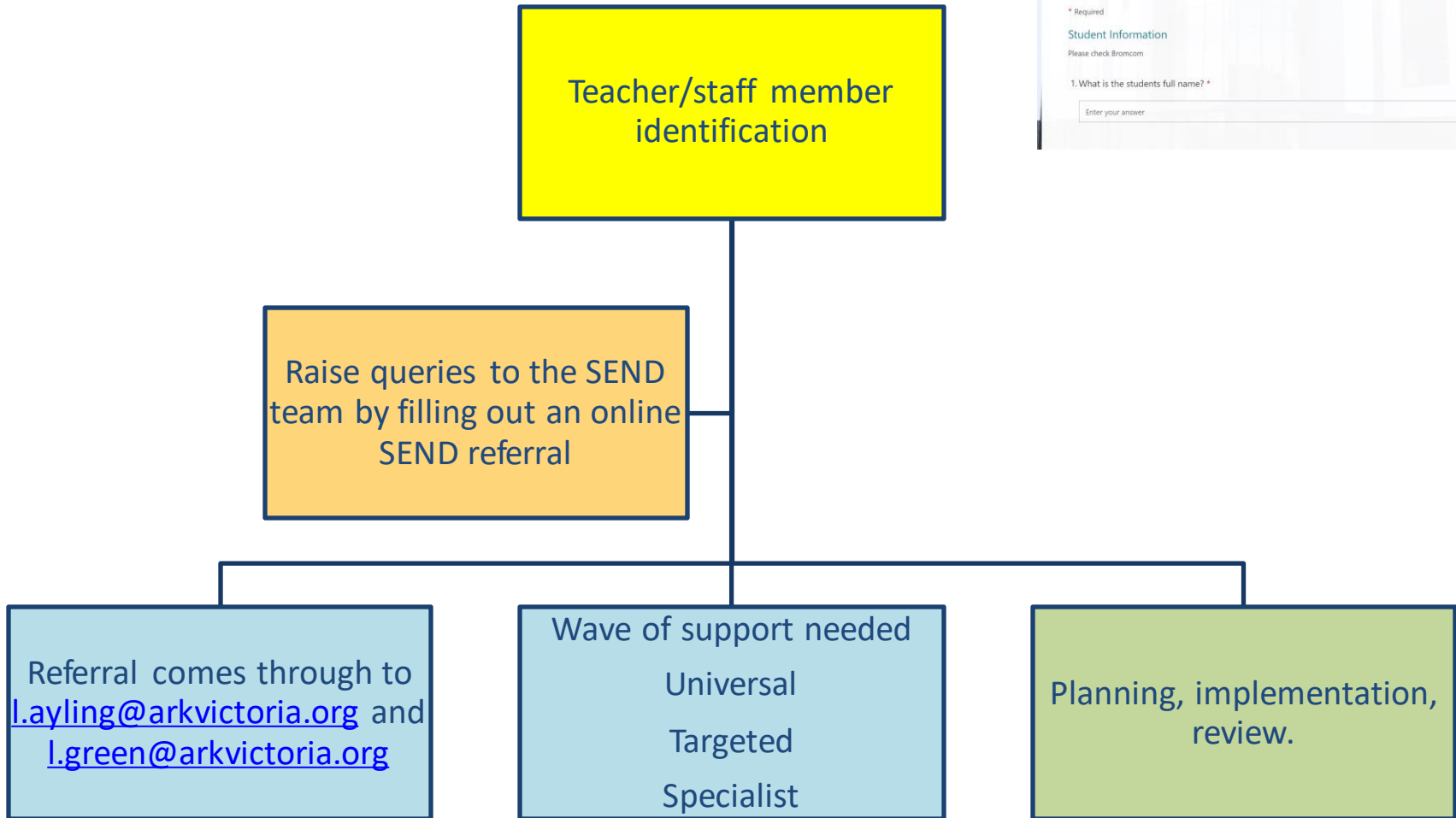
The graduated approach



A teacher's role in identification

- Be self-reflective
- The physical environment
- Use of language
- Lesson content
- Target setting
- Strengthening relationships

Referral



Pupil Passports/Individual Learning Plans

Summary of SEN

Likes

Date of birth: 21/2/2018

Year group: R

Tutor group: R Zephaniah

House: Zephaniah

Dislikes

What I find difficult

What I am good at

Things that support me with my learning

- Visuals
- Now and Next board

People who help me/I can talk to

Access arrangements

Normal Way of Working/Reasonable Adjustments



Plan

| Area of concern | Target | Success criteria | Strategies & Provisions | Key staff |
|------------------------|---|--|---|---|
| Speaking and listening | Can follow what others say in larger groups (8+ pupils) and usually responds appropriately with verbal contributions. | Respond appropriately to partner in talk tasks Contribute to class discussion using discussion prompts. Rephrase and explain what another pupil has said | Teacher to model asking questions to find out more information. Allow time to process language and respond. Adult use non-verbal communication and verbal fillers to help maintain conversation. | • Ms Anisha Rani (Classroom Teacher) |
| Reading | The pupil can talk about events in a story but needs to be able to link them to their own experiences. | Use stories that pupils can relate to their own experiences. Include stories with human characters as well as animals / fictional creatures. Home reader - ask questions relating event to own experiences. | Teacher to model and think aloud to relate stories to own experiences. Teacher to use 6-step vocab to broaden context to develop understanding of a word/concept. Break it down strategies to help answer inference questions. | • Ms Anisha Rani (Classroom Teacher) |
| Writing | Can write sentences that are sequenced to form a short narrative (real or fictional) | Hot task | Provide sequences of pictures with a series of sentences to caption. Talk about the sequence. Read the jumbled sentences; agree which order the sentences could be arranged. Model questions - "Which sentence comes first?" 'And then?' | • Ms Anisha Rani (Classroom Teacher) |
| Maths | Multiplication | Use known facts to find related facts | Improved score on arithmetic test in summer 2. Morning arithmetic quizzes. | • Ms Anisha Rani (Classroom Teacher) |

Signpost for support

<https://www.localofferbirmingham.co.uk/>

- Training
- Advice and support
- Things to do
- Webinars
- Events for parents



Be Empowered.....

Early Support Programme for SEND Parent Carers

Be Empowered Workshops
The first Face to Face workshop of this academic year
Wednesdays 10am – 1pm (for 6 weekly sessions)
Starting Wed 11th, Wed 18th, Wed 25th January, Wed 1st, Wed 8th, and
Wed 15th February 2023

At Northfield Community Partnership, St Nicholas Place, 81 The Green,
Kings Norton, Birmingham, B38 8RU.

Are you a parent of a child with special or additional needs?

Do you want to meet with other parents and learn more about local and national services and what they can offer?

Do you want to feel more confident about working with practitioners and making decisions about your child's journey?

We warmly invite you to a series of workshops that have been written by and are led by trainers who are parent/careers of a child with additional needs themselves.

These workshops are for parent/careers of children and young people of any age, with any additional need, with or without a diagnosis. They are an attempt to support parent/careers through times of change and at whatever stage of the journey participants may find themselves.

TO BOOK – Complete the booking form and return to:
BeEmpowered@birmingham.gov.uk

For more information please contact: Christine Leggett on 07770 762 056

DEADLINE FOR RECEIVING COMPLETED BOOKING FORMS IS WEDNESDAY 14TH DECEMBER 2022!

N.B We are unable to provide creche facilities.

Mental Health at AVA

- Mental Health First Aid
- Referrals
- Mental Health Ambassadors
- Projects
- Community Engagement



Ark Victoria
Academy



Community Engagement Update

Mohamed Ibrahim



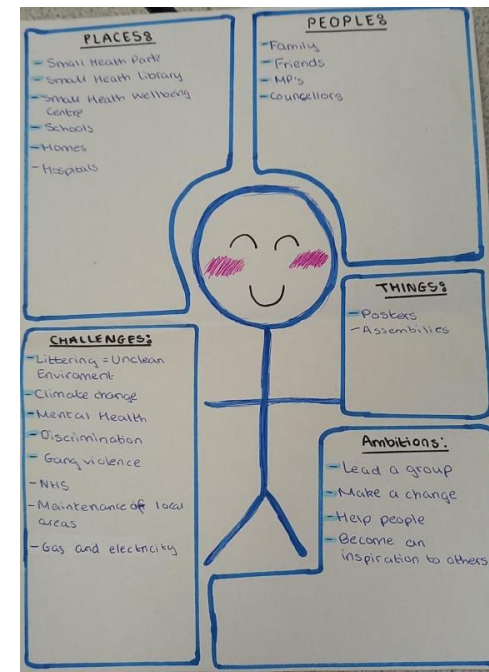
'Growing, Learning, Succeeding Together'

The three strands of the role...



Strand 1 – Education and Training

- Parent Reading Workshop
- Citizens UK Student Leadership Program (Primary and Secondary)



- Tyseley Energy Park – work experience opportunities

Strand 1 – Education and Training

- Citizens UK Training – for parents and staff

| | | |
|---|---|--|
| Women In Community Leadership Training | Part 1: Mon 28th Nov Part 2: Mon 23rd Jan Part 3: Mon 27th Feb Part 4: 8th March All sessions 9:30-12:30 Multiple venues TBC | Many of the leaders on the ground doing vital work in our communities are women. These sessions (co-facilitated by some of our female chapter leaders), will grow and strengthen our cohort of women leaders – developing the tools to listen, lead, and act. To confirm a place, email Saidul.Haque@citizensuk.org |
|---|---|--|

***citizens*uk**

Strand 1 – Education and Training

- Birmingham Adult Education Service / Early Help Team: 6 week courses tailored to the needs of the group.
- Courses in: Green Living, Family Wellbeing, Healthy Living, Digital Skills, Creative Arts Media, Route to work and much much more!



Strand 2 - Pastoral

What can we do to support our community with the cost of living/energy crisis?

- Citizens UK Parent Workshop on Housing
- Advice Surgeries (date TBC) – Jess Phillips MP
- Listening campaign at school gates with Mrs Khan.
- Follow Up PTA meeting – 12th December 9am-10am

Strand 3 - Enrichment



Upcoming Events

- Jess Phillips MP Visit – 10th and 17th February 2023
- Earth Day – Friday 28th April 2023
- Summer Fete – Wednesday 19th July 2023
- Community Kitchen – support from UOB

Communication



Secondary events

- Y11 Parents' Evening 8th December
- Green Lane Mosque student workshops 13th December
- Performance of Aladdin 14th and 15th December
- Pupils' Christmas lunch 14th December
- End of term celebrations and festive jumper 16th December
- Term starts for everyone on January 6th 2023 at the usual time

Primary Events

- Winter music event Y5/6 Choir *5th December*
- Year 1 Nativity 9.15am *6th December*
- Y5 Theatre Trip *7th and 8th December*
- Year 1 visit from Toy Lady *7th December*
- Goldilocks Pantomime YR/1/2 *8th December*
- Book give-away *9th December*
- Aladdin performance for Y3/4 *12th December*
- Pupils' Christmas lunch *12th December*
- End of term parties *15th December*